

## A Note From Our Pastor...

Dear Parishioners and Friends,

It is with great excitement that I am sharing with you these preliminary building plans to accommodate the needs of our growing parish. We know our thriving community and myriad ministries have outgrown our current space. As a result of input received from both parishioners and staff, we have developed initial plans for our parish campus that include the addition of a multi-purpose education center and a remodeling of our current social hall and classrooms to accommodate our needs. However, this is your parish and it is only with your support that we will be able to move forward with any expansion and renovation projects.

During October and November 2018, we will conduct a Feasibility Study in preparation of a parish-wide capital campaign. Every family will be invited to provide feedback and assist in charting the course for the future of St. Joan of Arc.

In Psalm 127 we read, *“Unless the Lord build the house, in vain do the builders labor.”* We do not want to work in vain; we want to come as His sons and daughters, to support and build up a place that will meet the needs of our community. Please join us in the process of study and prayerful reflection. We hope you will take this opportunity to express your opinions and ask your questions. This project is your decision.

Sincerely yours in Christ,

Fr. James P. Black  
Pastor



## New Construction

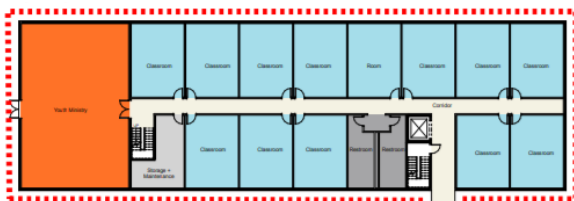
- Self-contained classroom wing
- 26 new classrooms
- 2 stories plus full basement
- Dedicated youth ministry space
- Social hall addition
- New, larger, commercial kitchen with load-in access from the parking lot
- Increase social hall seating capacity by 25%
- Two new, dedicated adult meeting rooms
- 2 new public restroom facilities
- 33,500 square feet of new space

## Renovations

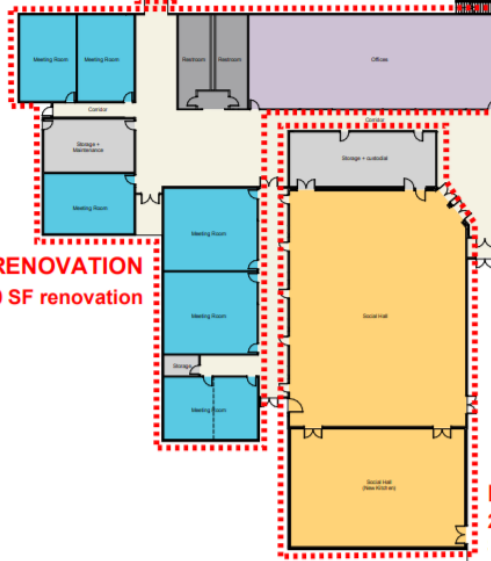
- Social Hall fully renovated and current social hall classrooms removed
- Current kitchen becomes storage facility
- Classrooms 7-12 & 19-20 renovated into 5 larger, dedicated meetings spaces for adults
- Classrooms 1-6 renovated into a common staff office space
- Business office renovated into a choir rehearsal and meeting space
- Current youth ministry and PSR storage office converted into an additional restroom facility
- 17,800 square feet of renovated space

Preliminary cost estimate of \$6.2 million is based on square footage and current construction prices.

### NEW CLASSROOM WING 2 stories + full basement 30,000 SF



### MEETING ROOM & OPEN OFFICE RENOVATION 1100 SF new construction + 10,700 SF renovation



### CHOIR PRACTICE RENOVATION 1450 SF renovation



### NEW KITCHEN & SOCIAL HALL RENOVATION 2400 SF new construction + 5650 SF renovation

Proposed First Floor Plan

